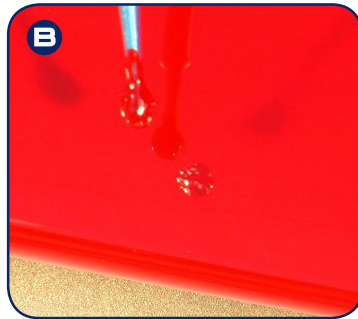
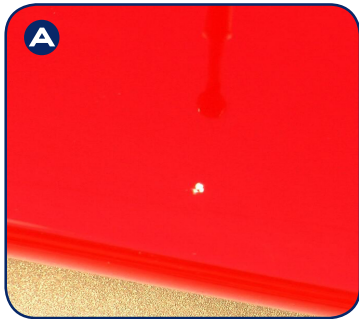


Paint, blend and polish.

3 simple steps to paint perfection.



Step 1: Painting

Thoroughly clean the damaged area, removing all dirt and polish (fig.A). Apply the Step 1 Paint with the microbrush provided onto the chipped area (fig.B). The paint can be applied liberally as you can remove the excess paint with the step 2 Blending Solution. Once you have applied the paint to the damaged area immediately smear the paint flat across the chipped area with a protective gloved hand (fig.C). Smearing the paint will not cause damage to your paintwork as this is part of the process. Make sure the paint is smeared out flat so that it is touch dry. The drying time is between 40 seconds to 5 minutes, depending on the ambient temperature and quantity of paint applied to the area.

(Should your vehicle have 'Road Rash' damage whereby the paintwork has been heavily peppered with stone chips you can apply the paint to the finger of your gloved hand by dipping your finger inside the paint pot and wiping the paint onto the damaged area). Once the paint is dry the chips will have filled leaving a matted finish that is then ready for removal with the Blending Solution.

Step 2: Blending

Once the paint is dry, apply the Step 2 Blending Solution sparingly to the blue paint removal cloth (fig.D). Gently run the cloth across the surface to remove the excess paint (fig.E). Should you have applied the paint with your finger as in the case of 'Road Rash' you will have to apply extra blending solution due to the increased application of paint. Once all the excess paint is removed from the chip, leave to dry for a few minutes and then polish your car as usual using the Ceramic Polish.

Step 3: Polishing

Once dry lightly apply the Step 3 Ceramic Polish to the repaired area with the microfiber cloth to complete the process. Once the polish has dried to an opaque haze gently remove the polish with the reverse side of the Microfibre cloth (fig.F). The Ceramic Polish can also be used for the removal of light scratches from the vehicles paintwork should this be necessary.

Brushes and Blending Solution:

Should you require replacement brushes or Blending Solution this can be purchased directly from ChipEx.

STORAGE INSTRUCTIONS: It is important to keep your ChipEx kit in a cool dry place and out of direct sunlight.



Chipex Ltd
 Unit 10, Thorpe Way Industrial Estate,
 Oxfordshire, OX16 4SP
 United Kingdom
 Tel: +44(0)1295 25830
www.chipex.co.uk

- Xi - IRRITANT
- CONTAINS : 1-BUTANOL
- R36 Irritating to eyes.
- R66 Repeated exposure may cause skin dryness or cracking.
- R67 Vapours may cause drowsiness and dizziness.
- R10 FLAMMABLE.
- S46 If swallowed, seek medical advice immediately and show this container or label.
- S23+S38+S24 Do not breathe vapour/spray; respiratory equipment. Avoid contact with skin.
- S26 In case of contact with eyes, rinse immediately with plenty of water and seek medical advice.
- Keep out of reach of children.

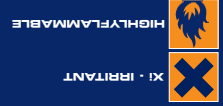
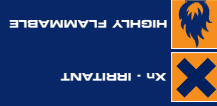
CUSTOM MIXED PAINT

- R11 Highly flammable.
- R20/21 Harmful by inhalation and in contact with skin.
- R38 Irritating to skin.
- R65 Harmful; May cause lung damage if swallowed.
- R51/53 Toxic to aquatic organisms. May cause long-term adverse effects in the aquatic environment.
- S16 Keep away from sources of ignition - No Smoking.
- S23A Do not breathe vapour.
- S24 Avoid contact with skin.
- S36/37 Wear suitable protective clothing and gloves.
- S62 If swallowed, do not induce vomiting. Seek medical advice immediately and show this container or label.
- S61 Avoid release to the environment.
- Keep out of reach of children.

BLENDING SOLUTION

- Avoid prolonged contact with skin.
- Wear suitable protective clothing and gloves.
- If swallowed, do not induce vomiting.
- Use in a well ventilated room.
- Keep out of reach of children.
- Avoid contact with fabrics/textiles.
- Keep from freezing.

POLISH



HEALTH & SAFETY INSTRUCTIONS



APPLICATION INSTRUCTIONS